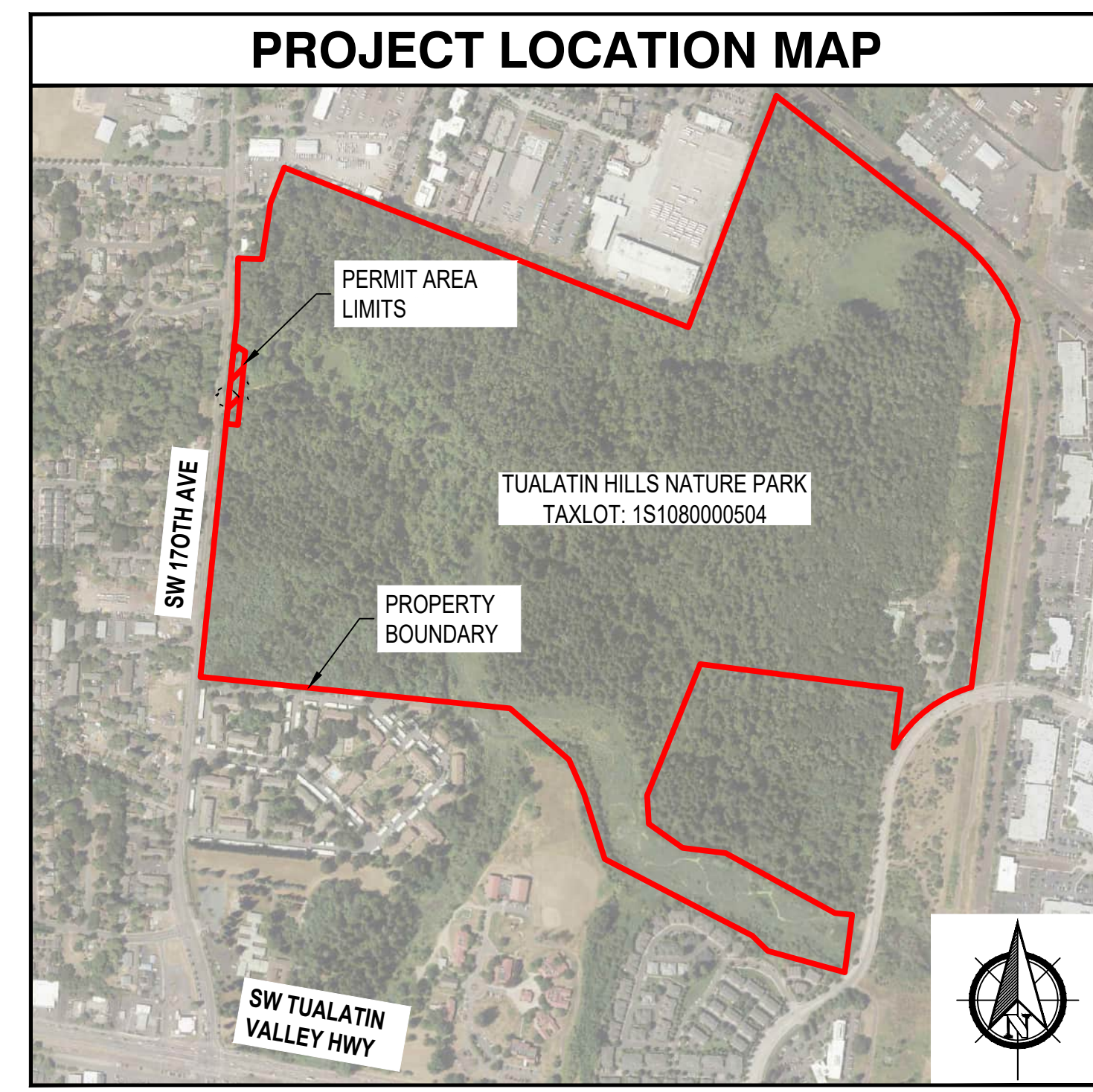
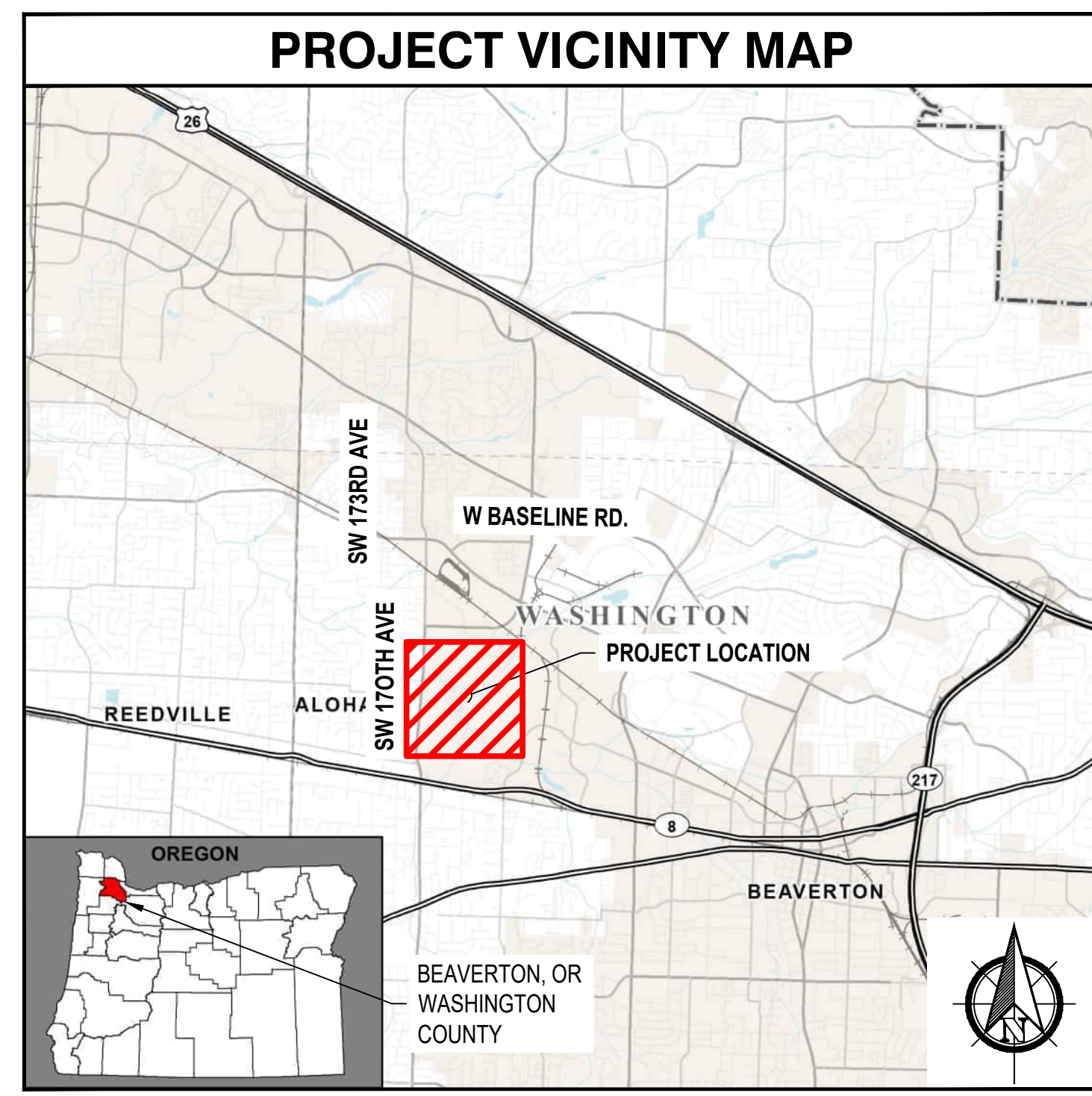
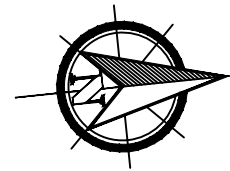


EXISTING CONDITIONS SITE PLAN

1" = 20'



TREE PLAN 2 - EXISTING CONDITIONS PLAN

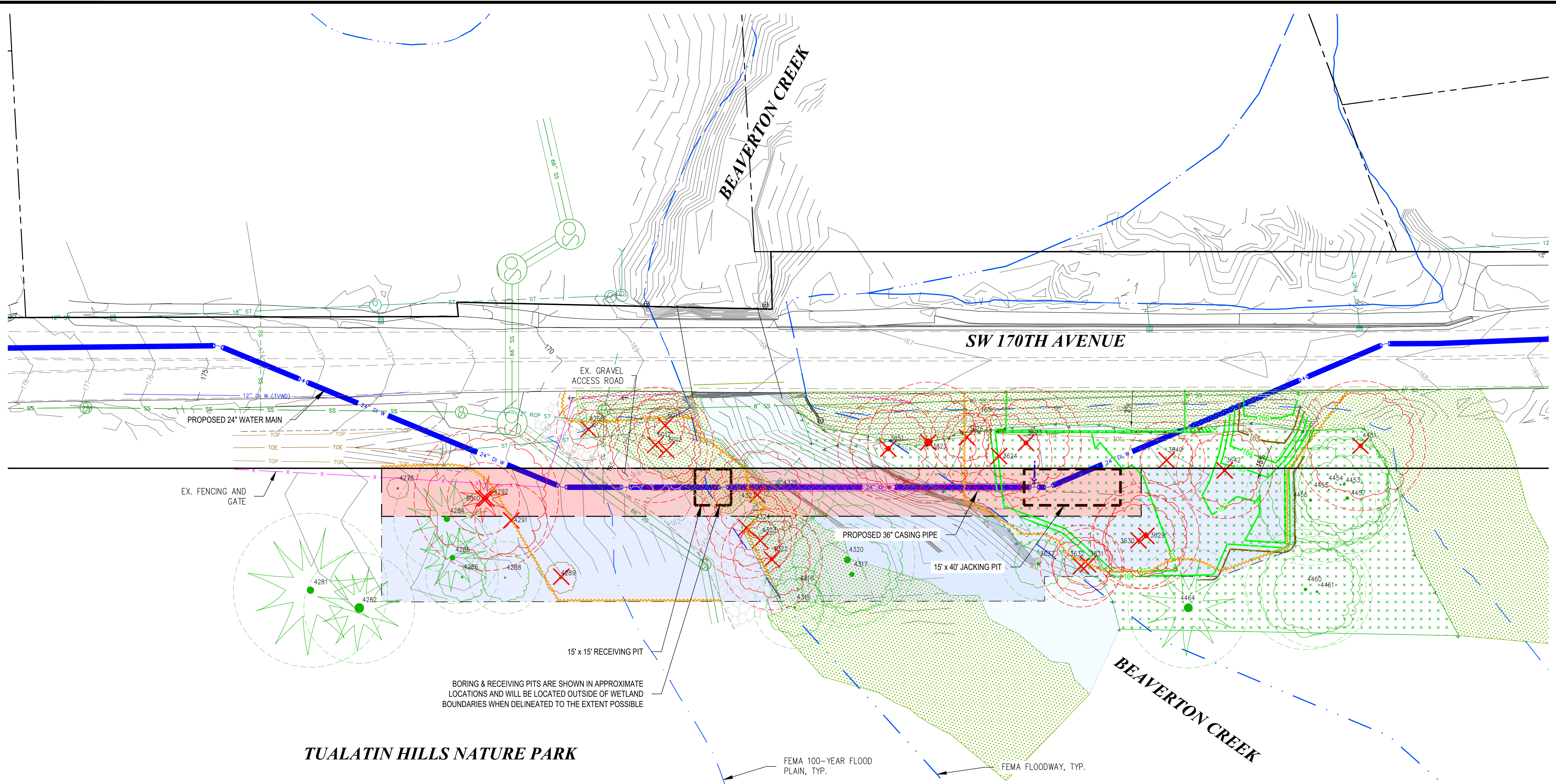
NORTH TRANSMISSION LINE INTERTIE - SEGMENT 1

SCALE: NTS

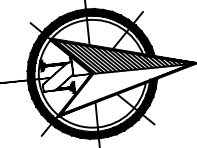
0' 1/2" 1"

DRAWING IS FULL SCALE WHEN BAR MEASURES 1"

REVISION DATE: 3/15/2024
 PLOT DATE: 3/15/2024
 FILE PATH: J:\Data\BEAV\23-0038\CAD\Segment1\Exhibits\Tree Exhibits\COB Tree Plan 2\NRTL1-E-TP2_ExistingConditions.DWG



DIMENSIONED SITE PLAN
1" = 20'



LEGEND			
	5' PROTECTION ZONE DRIPLINE		EXISTING DECIDUOUS TREE
	5' PROTECTION ZONE DRIPLINE CROWN		TREE PROTECTION FENCING
	EXISTING CONIFER TREE		TEMPORARY EASEMENT
	EXISTING TREE TO BE REMOVED		PERMANENT EASEMENT

TREE PLAN 2 - DIMENSIONED SITE PLAN

NORTH TRANSMISSION LINE INTERTIE - SEGMENT 1

SCALE: NTS

DRAWING IS FULL SCALE WHEN BAR MEASURES 1"

REVISION DATE: 3/15/2024
 PLOT DATE: 3/15/2024
 FILE PATH: J:\Data\BEAV\23-0038\CAD\Segment 1\Exhibit\Tree Exhibit\COB Tree Plan 2\NTRL1-E-TP2_PROPOSEDCONDITIONS.DWG



TREE TABLE												
TREE NO.	DWG NO.	LOCATION (NOTE 1)	COMMON NAME	SPECIES NAME	DBH (NOTE 2)	C-RAD (NOTE 3)	COND (NOTE 4)	CLASS (NOTE 5)	COMMENTS	EXEMPT (NOTE 6)	REASON (NOTE 7)	TREATMENT
3623	EP-08	ROW	OREGON ASH	FRAXINUS LATIFOLIA	22	18	F	ROW	COLUMN OF ADVANCED TRUNK DECAY	YES	WA CO.	REMOVE
3624	EP-08	ROW	OREGON ASH	FRAXINUS LATIFOLIA	14	17	F	ROW		YES	WA CO.	REMOVE
3626	EP-08	ROW	SCOULE'S WILLOW	SALIX SCOULERIANA	10	10	F	ROW	CODOMINANT STEMS 2X7, TRUNK DECAY	YES	WA CO.	REMOVE
3627	EP-08	ROW	OREGON ASH	FRAXINUS LATIFOLIA	36	20	F	ROW	MULTIPLE STEMS, IVY, DEAD AND BROKEN BRANCHES	YES	WA CO.	REMOVE
3629	EP-08	THPRD	OREGON ASH	FRAXINUS LATIFOLIA	22	17	F	3,4	CODOMINANT STEMS, EXTENSIVE IVY	-	-	REMOVE
3630	EP-08	THPRD	OREGON ASH	FRAXINUS LATIFOLIA	14	15	F	3,4	EXTENSIVE IVY	-	-	REMOVE
3631	EP-08	THPRD	OREGON ASH	FRAXINUS LATIFOLIA	8	10	F	3,4	EXTENSIVE IVY	-	-	REMOVE
3632	EP-08	THPRD	OREGON ASH	FRAXINUS LATIFOLIA	10	12	F	3,4	EXTENSIVE IVY	-	-	REMOVE
3637	EP-08	THPRD	OREGON ASH	FRAXINUS LATIFOLIA	14	10	P	3,4	SEVERE DECLINE, MOSTLY DEAD	-	-	RETAIN
3640	EP-08	ROW	OREGON ASH	FRAXINUS LATIFOLIA	10	11	F	ROW		YES	WA CO.	REMOVE
3642	EP-08	THPRD	OREGON ASH	FRAXINUS LATIFOLIA	14	15	F	3,4	CODOMINANT STEMS 8,12	-	-	REMOVE
3651	EP-08	ROW	OREGON ASH	FRAXINUS LATIFOLIA	24	16	F	ROW	CODOMINANT STEMS 14,20; 20" STEM IS A DECAYING SNAG	YES	WA CO.	REMOVE
4268	EP-08	ROW	RED ALDER	ALNUS RUBRA	8	8	F	ROW		YES	WA CO.	REMOVE
4278	EP-08	THPRD	SWEET CHERRY	PRUNUS AVIUM	9	0	D	3,4	DEAD	YES	NUISANCE	RETAIN
4281	EP-08	THPRD	DOUGLAS FIR	PSEUDOTSUGA MENZIESII	34	27	G	3,4	DOMINANT TREE	-	-	RETAIN
4282	EP-08	THPRD	WESTERN RED CEDAR	THUJA PLICATA	45	18	F	3,4	CODOMINANT STEMS 2X20,2X25	-	-	RETAIN
4284	EP-08	THPRD	PONDEROSA PINE	PINUS PONDEROSA	29	17	G	3,4	DOMINANT TREE	-	-	RETAIN
4285	EP-08	THPRD	DOUGLAS FIR	PSEUDOTSUGA MENZIESII	26	14	G	3,4	DOMINANT TREE	-	-	RETAIN
4286	EP-08	THPRD	CASCARA	RHAMNUS PURSHIANA	9	10	F	3,4		-	-	RETAIN
4288	EP-08	THPRD	BIGLEAF MAPLE	ACER MACROPHYLLUM	8	10	F	3,4		-	-	RETAIN
4289	EP-08	THPRD	RED ALDER	ALNUS RUBRA	13	0	D	3,4	DEAD	YES	DEAD	REMOVE
4291	EP-08	THPRD	BIGLEAF MAPLE	ACER MACROPHYLLUM	11	0	D	3,4	DEAD	YES	DEAD	REMOVE
4292	EP-08	THPRD	EUROPEAN WHITE BIRCH	BETULA PENDULA	18	25	F	3,4	INVASIVE SPECIES	YES	NUISANCE	REMOVE
4315	EP-08	THPRD	OREGON ASH	FRAXINUS LATIFOLIA	11	12	G	3,4	LOWER TRUNK DAMAGE	-	-	RETAIN
4316	EP-08	THPRD	OREGON ASH	FRAXINUS LATIFOLIA	8	9	F	3,4	LOWER TRUNK DECAY	-	-	RETAIN
4317	EP-08	THPRD	OREGON ASH	FRAXINUS LATIFOLIA	23	16	P	3,4	DIEBACK, LOW VIGOR	-	-	RETAIN
4320	EP-08	THPRD	OREGON ASH	FRAXINUS LATIFOLIA	32	23	P	3,4	CODOMINANT STEMS 20,25,DIEBACK, HISTORY OF LARGE BRANCH FAILURE, CROWN DECAY	-	-	RETAIN
4322	EP-08	THPRD	OREGON ASH	FRAXINUS LATIFOLIA	16	16	G	3,4		-	-	REMOVE
4323	EP-08	THPRD	OREGON ASH	FRAXINUS LATIFOLIA	7	8	F	3,4		-	-	REMOVE
4324	EP-08	THPRD	OREGON ASH	FRAXINUS LATIFOLIA	11	16	G	3,4		-	-	REMOVE
4326	EP-08	THPRD	OREGON ASH	FRAXINUS LATIFOLIA	7	18	F	3,4	ONE-SIDED WITH LEAN NORTH, LOWER TRUNK DAMAGE	-	-	RETAIN
4327	EP-08	THPRD	OREGON ASH	FRAXINUS LATIFOLIA	11	18	F	3,4	ADVANCED DECAY IN LOWER TRUNK	-	-	REMOVE
4451	EP-08	ROW	OREGON ASH	FRAXINUS LATIFOLIA	20	22	F	ROW	COLUMN OF TRUNK DECAY WITH HOLLOW IN PLANE OF LEAN TO STREET	YES	WA CO.	REMOVE
4453	EP-08	THPRD	OREGON ASH	FRAXINUS LATIFOLIA	11	19	F	3,4	CODOMINANT STEMS 5,10, ONE-SIDED TO WEST	-	-	RETAIN
4454	EP-08	THPRD	OREGON ASH	FRAXINUS LATIFOLIA	7	20	F	3,4	ONE-SIDED TO WEST	-	-	RETAIN
4455	EP-08	THPRD	OREGON ASH	FRAXINUS LATIFOLIA	7	25	P	3,4	ONE-SIDED WITH LEAN SOUTH, 13' TO LOW-LYING LIMBS	-	-	RETAIN
4456	EP-08	THPRD	OREGON ASH	FRAXINUS LATIFOLIA	14	22	G	3,4	DOMINANT TREE IN DENSE GROUP	-	-	RETAIN
4457	EP-08	THPRD	OREGON ASH	FRAXINUS LATIFOLIA	16	18	G	3,4	DOMINANT TREE IN DENSE GROUP, UNUSUAL ROOTING	-	-	RETAIN
4460	EP-08	THPRD	OREGON ASH	FRAXINUS LATIFOLIA	15	20	G	3,4	CODOMINANT LEADERS, IVY	-	-	RETAIN
4461	EP-08	THPRD	OREGON ASH	FRAXINUS LATIFOLIA	11	18	F	3,4	CODOMINANT STEMS 5,10	-	-	RETAIN
4464	EP-08	THPRD	WESTERN RED CEDAR	THUJA PLICATA	41	20	F	3,4	CODOMINANT STEMS 22, 35, LOWER TRUNK DECAY, VERY EXTENSIVE IVY, MULTIPLE LEADERS, ONE WITH TOP DIEBACK	-	-	RETAIN
6010	EP-08	THPRD	DOUGLAS FIR	PSEUDOTSUGA MENZIESII	14	10	F	3,4	HIGH LIVE CROWN, TRUNK INTERTWINED WITH BIRCH	-	-	REMOVE
6011	EP-08	ROW	BLACK HAWTHORN	CRATAEGUS DOUGLASII	7	8	F	ROW	CROWN DIEBACK	YES	WA CO.	REMOVE
6012	EP-08	ROW	OREGON ASH	FRAXINUS LATIFOLIA	9	19	F	ROW		YES	WA CO.	REMOVE
6013	EP-08	ROW	OREGON ASH	FRAXINUS LATIFOLIA	7	12	F	ROW		YES	WA CO.	REMOVE

TREE TABLE NOTES	
1.	"LOCATION" IDENTIFIES WHETHER TREES ARE LOCATED WITHIN: ROW THE CITY OF BEAVERTON RIGHT-OF-WAY WA CO. ROW WASHINGTON COUNTY RIGHT-OF-WAY WA CO. COUNTY-OWNED PARCELS THPRD TUALATIN HILLS PARK & RECREATION DISTRICT PROPERTY TM TRIMET PROPERTY PRIV PROP PRIVATE PROPERTY
2.	"DBH" IS TREE DIAMETER MEASURED AT BREAST HEIGHT, 4.5- FEET ABOVE THE GROUND LEVEL (IN INCHES); WHEN ONE OR MORE CODOMINANT STEMS ARE PRESENT, DBH OF EACH STEM IS RECORDED AND SEPARATED BY A COMMA OR DESCRIBED AS QUANTITY X SIZE. NOTE THAT DBH WAS VISUALLY ESTIMATED AND NOT PHYSICALLY MEASURED FOR TREES WHERE ASSESSMENT WAS LIMITED BY ACCESS CONSTRAINTS.
3.	"C-RAD" IS THE AVERAGE CROWN RADIUS MEASURED (IN FEET) OR ESTIMATED VISUALLY WHERE ACCESS WAS LIMITED.
4.	"COND" IS AN ARBORIST ASSIGNED RATING TO GENERALLY DESCRIBE THE CONDITION OF INDIVIDUAL TREES AS FOLLOWS- DEAD; POOR; FAIR; OR, GOOD.
5.	"CLASS" IDENTIFIES TREES PER SECTION 60.60.10 OF THE BDC, AS EITHER: 1-SIGNIFICANT INDIVIDUAL TREES; 2-HISTORIC TREE; 3-TREES WITHIN SNRA; 4-TREES WITHIN SIGNIFICANT GROVES; 5-LANDSCAPE TREES; 6-COMMUNITY TREES; OR 7-MITIGATION TREES. ROW IDENTIFIES STREET TREES REGULATED BY THE BEAVERTON MUNICIPAL CODE AND N/A IDENTIFIES TREES LOCATED ON PRIVATE PROPERTY SMALLER THAN THE 10-INCH DIAMETER THRESHOLD FOR COMMUNITY TREES OR OUTSIDE CITY OF BEAVERTON JURISDICTION.
6.	"EXEMPT" IDENTIFIES TREES THAT ARE EXEMPT FROM TREE PLAN REQUIREMENTS PER CHAPTER 90 AND SECTION 40.90.10 OF THE BDC.
7.	"REASON" PROVIDES THE REASON TREES ARE EXEMPT, INCLUDING: SIZE (TREES SMALLER THAN 10 INCHES DBH, EXCEPT FOR WESTERN HEMLOCK (TSUGA HETEROPHYLLA), MOUNTAIN HEMLOCK (TSUGA MERTENSIANA), PACIFIC MADRONE (ARBUTUS MENZIESII), AND BIGLEAF MAPLE (ACER MACROPHYLLUM)); TREES SMALLER THAN 6-INCHES DBH PER CHAPTER 90 DEFINITION OF 'SURVEYED TREES'; HAZARDOUS, DEAD, OR DISEASED CONDITION IDENTIFIED AS SUCH BY A CERTIFIED ARBORIST; NUISANCE FOR TREES LISTED AS NUISANCE SPECIES IN SECTION 40.90.10 OF THE BDC OR IN THE CITY OF PORTLAND'S NUISANCE PLANT LIST OR IN CLEAN WATER SERVICES' DESIGN AND CONSTRUCTION STANDARDS; STREET FOR TREES LOCATED IN PUBLIC RIGHTS-OF-WAY; OR, WA CO. FOR TREES OUTSIDE CITY OF BEAVERTON JURISDICTION.


BEAVERTON CREEK CROSSING TREE MITIGATION TABLE	
DBH OF NON-EXEMPT SURVEYED TREES	496.4
DECIDUOUS	306.8
CONIFEROUS	189.6
DBH PROPOSED FOR REMOVAL (MAXIMUM REMOVAL ALLOWED IS 75% SURVEYED TREE DBH)	127.4
MITIGATION THRESHOLD (50% SURVEYED TREE DBH)	248.2
DBH TO BE MITIGATED (75% DBH REMOVAL - 50% DBH THRESHOLD = 25% SURVEYED DBH)	0.0
ON SITE MITIGATION (50% OF THE DBH TO BE MITIGATED)	N/A
OFF SITE OR PARTIAL OFF SITE MITIGATION (100% OF THE DBH TO BE MITIGATED)	N/A

TREE PLAN 2 - TREE TABLE

NORTH TRANSMISSION LINE INTERTIE - SEGMENT 1

SCALE: NTS



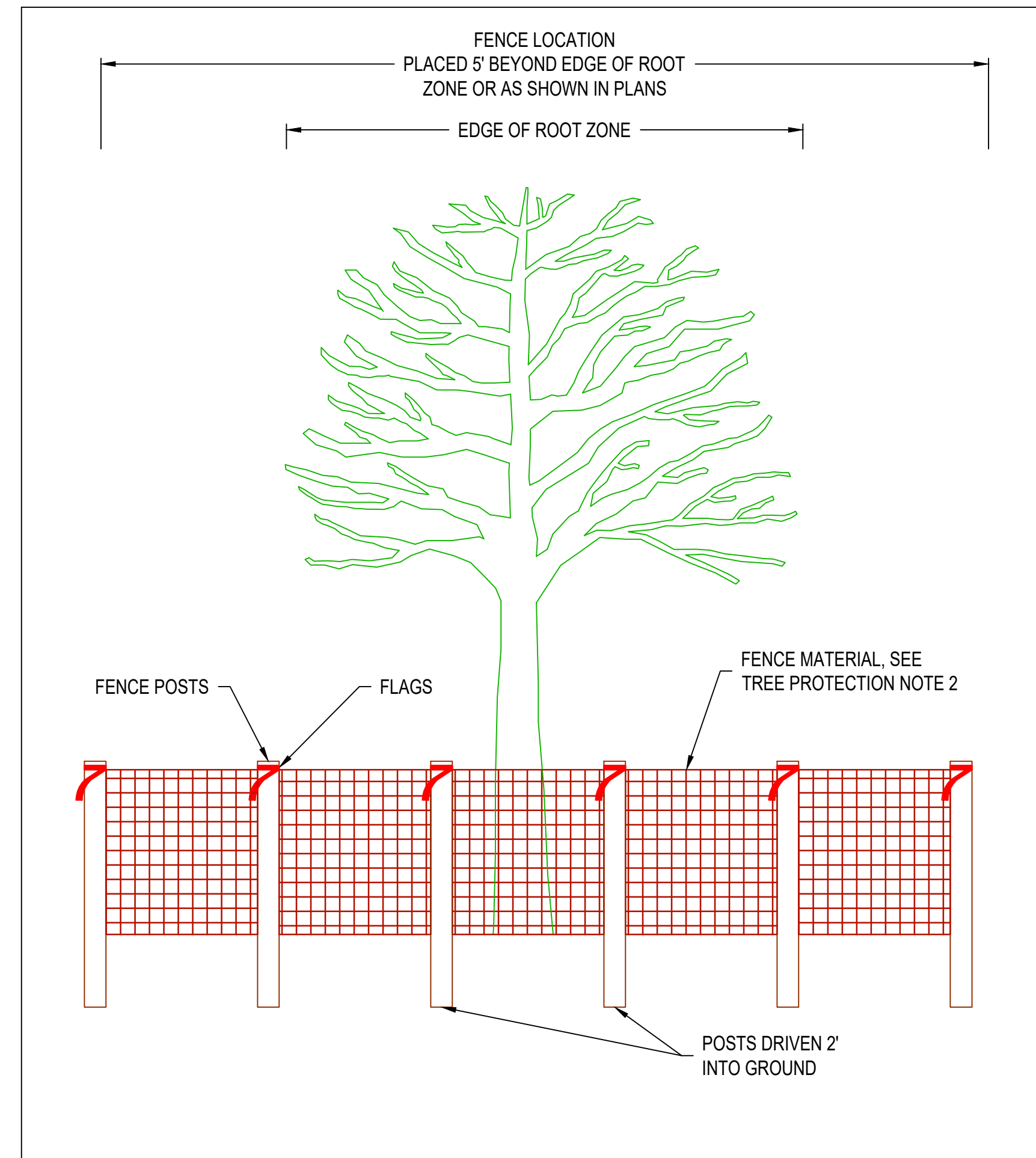
0' 1/2' 1'

DRAWING IS FULL SCALE WHEN BAR MEASURES 1"

REVISION DATE: 3/15/2024
 PLOT DATE: 3/18/2024
 FILE PATH: J:\Data\BEAV\23-0038\CAD\Segment 1\Exhibits\Tree Exhibits\COB Tree Plan 2\NTLI-E-TP2_PROPOSEDCONDITIONS.DWG

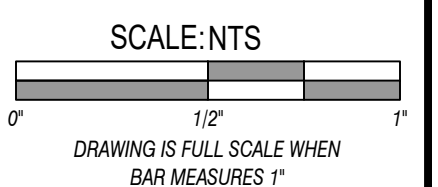
TREE PROTECTION NOTES

1. TREE ROOT PROTECTION ZONE: THE ROOT PROTECTION ZONE (RPZ) IS DEFINED AS 5- FEET BEYOND THE DRIPLINE OF PROTECTED TREES REGARDLESS OF THE LOCATION OF TREE PROTECTION FENCING. PROTECTED TREE DRIPLINES AND 5-FOOT OFFSETS ARE SHOWN TO SCALE ON TREE PLAN DRAWINGS.
 2. TEMPORARY TREE PROTECTION FENCING: TREES TO BE RETAINED SHALL BE PROTECTED BY INSTALLATION OF TREE PROTECTION FENCING AT THE RPZ, OR AS OTHERWISE DEPICTED ON APPROVED SITE PLAN DRAWINGS. FENCING SHALL BE INSTALLED PRIOR TO CONSTRUCTION ACTIVITY, INCLUDING TREE REMOVAL AND DEMOLITION OF EXISTING INFRASTRUCTURE. THE FENCE SHALL BE A FOUR FOOT (4') TALL ORANGE PLASTIC OR SNOW FENCE, SECURED TO SIX FOOT (6') TALL METAL POSTS, DRIVEN TWO FEET (2') INTO THE GROUND. HEAVY 12-GAUGE WIRE SHALL BE STRUNG BETWEEN EACH POST AND ATTACHED TO THE TOP AND MIDPOINT OF EACH POST. COLORED TREE FLAGGING INDICATING THAT THIS AREA IS A TREE PROTECTION ZONE IS TO BE PLACED EVERY FIVE (5) LINEAR FEET ON THE FENCE TO ALERT CONSTRUCTION CREWS OF THE SENSITIVE NATURE OF THE AREA. FENCING SHALL BE MAINTAINED AND REMAIN IN PLACE UNTIL PHYSICAL DEVELOPMENT IS COMPLETE. FENCING SHALL NOT BE OPENED, ADJUSTED OR REMOVED WITHOUT PRIOR COORDINATION WITH THE PROJECT ARBORIST.
 3. PROHIBITED ACTIVITIES: WITHOUT AUTHORIZATION FROM THE PROJECT ARBORIST, NONE OF THE FOLLOWING SHALL OCCUR BENEATH THE DRIPLINE OF ANY PROTECTED TREE UNLESS OTHERWISE SHOWN ON THE APPROVED TREE PLAN:
 - GRADE CHANGE OR CUT AND FILL;
 - NEW IMPERVIOUS SURFACES;
 - UTILITY OR DRAINAGE FIELD PLACEMENT;
 - PLACING SOLVENTS OR IRRIGATED LANDSCAPING;
 - STAGING OR STORAGE OF MATERIALS AND EQUIPMENT; OR
 - VEHICLE MANEUVERING.
- THE CONTRACTOR SHALL BE RESPONSIBLE FOR CONTACTING THE PROJECT ARBORIST IN A TIMELY MANNER PRIOR TO WORKING BENEATH PROTECTED TREE DRIPLINES. ROOT PROTECTION ZONES MAY BE ENTERED FOR TASKS LIKE SURVEYING, MEASURING, AND SAMPLING. FENCES MUST BE CLOSED UPON COMPLETION OF THESE TASKS.
4. EROSION CONTROL: SILT FENCING REQUIRED TO BE INSTALLED WITHIN THE RPZ SHALL NOT BE TRENCHED IN PER MANUFACTURER SPECIFICATIONS TO AVOID ROOT DAMAGE. INSTEAD, ROLL THE BASE OF THE SILT FENCE AROUND A STRAW WATTLE AND STAKE THE WATTLE SECURELY INTO THE GROUND, OR USE COMPOST SOCKS OR OTHER SIMILAR MATERIALS THAT DO NOT REQUIRE TRENCHING.
 5. TREE REMOVAL: TREES TO BE REMOVED SHALL BE CLEARLY IDENTIFIED WITH TREE-MARKING PAINT OR OTHER METHODS APPROVED IN ADVANCED BY THE PROJECT ARBORIST. TREE REMOVAL SHALL BE PERFORMED BY A QUALIFIED TREE SERVICE. DIRECTIONALLY FELL TREES OR SURGICALLY REMOVE TREES WHERE NEEDED TO AVOID DAMAGE TO PROTECTED TREES. WHERE TREES ARE APPROVED FOR REMOVAL WITHIN A TREE PROTECTION ZONE, PROTECTION FENCING MAY BE TEMPORARILY OPENED FOR TREES TO BE FELLED; NO HEAVY MACHINERY IS ALLOWED INSIDE OF TREE PROTECTION ZONES, BUT A MACHINE MAY OPERATE OUTSIDE OF THE PROTECTION ZONE TO REACH IN AND DRAG FELLED TREES AWAY. CLOSE THE PROTECTION FENCING ONCE TREE REMOVAL IS COMPLETE.
 6. STUMP REMOVAL: STUMPS OF TREES PLANNED FOR REMOVAL THAT ARE LOCATED WITHIN THE RPZ OF RETAINED TREES SHOULD REMAIN IN THE GROUND WHERE FEASIBLE. OTHERWISE, STUMPS MAY BE REMOVED BY STUMP GRINDING TO JUST BELOW THE GROUND SURFACE OR EXTRACTED FROM THE GROUND UNDER THE ON-SITE SUPERVISION OF THE PROJECT ARBORIST. STUMPS OF DECIDUOUS TREES TO REMAIN IN THE GROUND MAY BE TREATED WITH AN HERBICIDE TO INHIBIT SPROUTING; FOLLOW MANUFACTURER'S SPECIFICATIONS.
 7. CROWN PRUNING: PRUNING MAY BE NEEDED TO PROVIDE OVERHEAD CLEARANCE TO AVOID CROWN DAMAGE DURING CONSTRUCTION AND TO REMOVE DEAD AND DEFECTIVE BRANCHES FOR SAFETY. CROWN PRUNING SHALL BE PERFORMED BY A QUALIFIED TREE SERVICE USING ISA BEST MANAGEMENT PRACTICES FOR PRUNING AND ANSI A300 STANDARDS.
 8. ROOT PRUNING: IF ROOTS OF PROTECTED TREES ARE ENCOUNTERED WHERE WORK IS PROPOSED OUTSIDE OF TREE PROTECTION ZONES, THE CONTRACTOR MAY PRUNE ROOTS SMALLER THAN 2-INCHES IN DIAMETER AS DIGGING PROGRESSES. ROOT PRUNING SHALL BE PERFORMED WITH PRUNING SHEARS OR A SHARP SAW. PRUNE ROOTS PERPENDICULAR TO THE NATURAL GROWTH DIRECTION WITH BARK FIRMLY ATTACHED. ROOTS MEASURING 2-INCHES AND LARGER IN DIAMETER SHOULD BE EXPOSED FOR THE PROJECT ARBORIST TO ASSESS PRIOR TO ROOT PRUNING. THE ARBORIST SHOULD DIRECT AND DOCUMENT PRUNING OF ROOTS 2-INCHES AND LARGER.



TREE PLAN 2 - NOTES AND DETAILS

NORTH TRANSMISSION LINE INTERTIE - SEGMENT 1



REVISION DATE: 3/15/2024
 PLOT DATE: 3/18/2024
 FILE PATH: J:\Data\BEAV\23-4038\CAD\Segment 1\Exhibits\Tree Exhibits\COB Tree Plan 2\NTRL1-E-TP2_PROPOSEDCONDITIONS.DWG